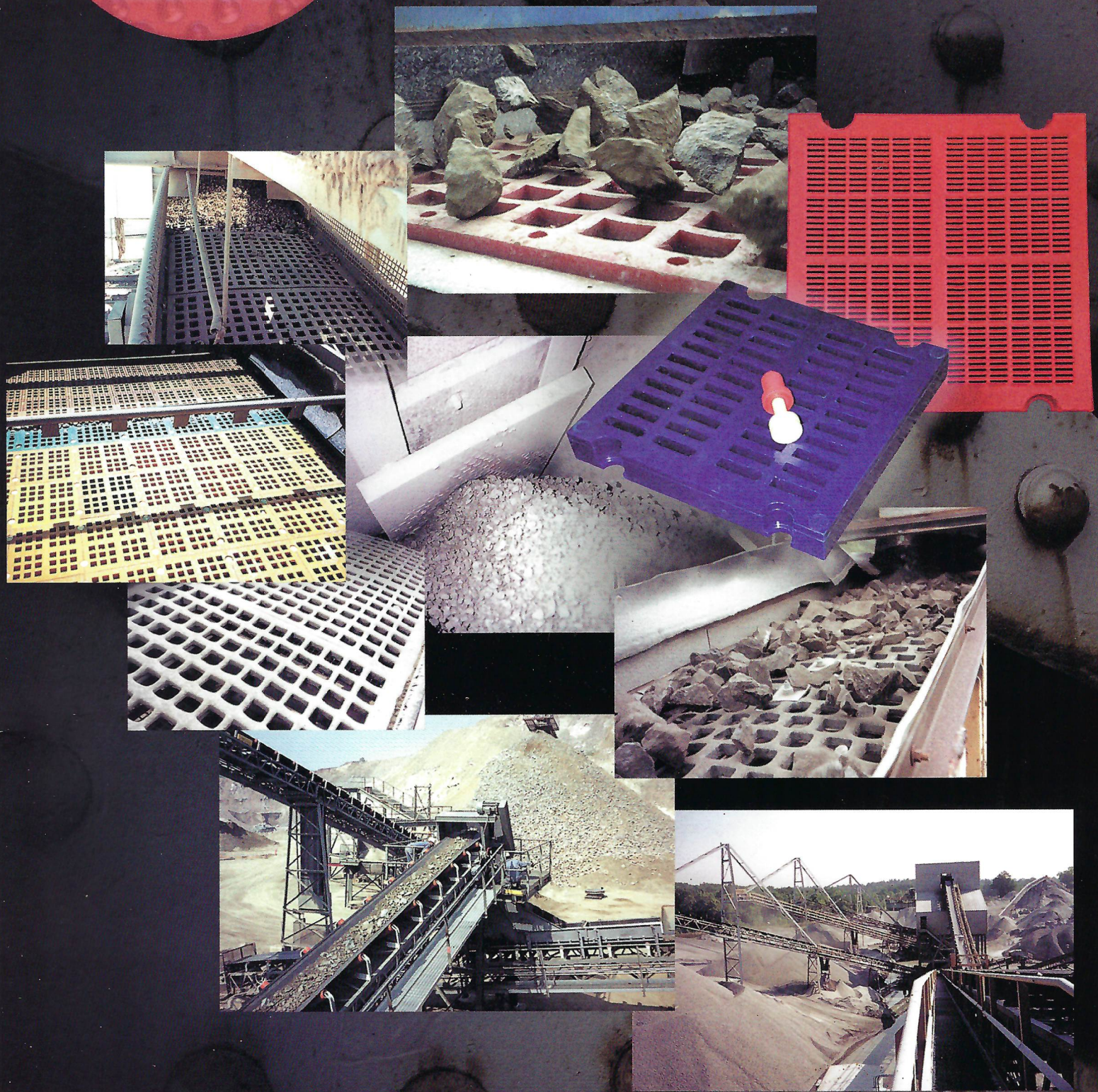


ZABCO Products, Inc.

Engineered Rubber and Urethane Screening Products for the Quarry and Mining Industry

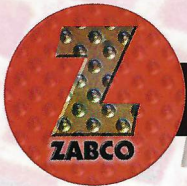


About ZABCO Products . . .

ZABCO Products specializes in providing the mining and quarry industries with engineered rubber and urethane screening products and abrasion resistant materials. Our many years of experience in rubber and urethane screening systems positions us to assist our customers in obtaining maximum utilization of operating equipment at reasonable and affordable prices.

Our capabilities include custom design and engineering of molded rubber and urethane products to meet and, in many cases, exceed your requirements.

We specialize in solving screening problems, such as blinding, caking, and wear life problems where others have failed. Our cast urethane modular screens are specially formulated for extended wear life, utilizing high-tech polymers and composites to achieve elevated performance standards.



RUBBER SCREENING PRODUCTS

INTRODUCING Z-CLAD RUBBER SCREEN PRODUCTS

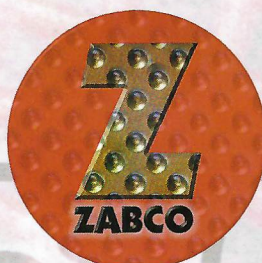
Z-CLAD Rubber Screens are constructed with premium proprietary grade abrasion resistant vulcanized rubber, with a full steel backing. These screens are designed to handle the rugged applications encountered in "scalping" operations and can withstand more abuse than other screening systems, (i.e. cable or modular screens).

Consider the many benefits of a Z-CLAD Screening System:

- Specially formulated proprietary rubber compounds for maximum abrasion resistance.
- Precisely manufactured laser burned backing plate to support heavy loads, even as the panel wears thinner.
- Offered in versatile bolt-down and hooked style configurations with or without skid bars.
- Molded and tapered rubber openings where the steel backing is 1/2" larger in size than the rubber opening, allowing near size particles to clear, preventing blinding and increasing productivity.
- Outlasts wire cloth by 10 - 15 times.
- Reduce noise levels by as much as 40%.
- Interchangeable with wire cloth or punched plate screens.
- Custom designed with impact zones made of solid rubber or Zerma-Clad™ ceramics.

**LET ZABCO PRODUCTS
WORK FOR YOU.**

**CALL US
AND START SAVING TODAY!**



ZABCO Products, Inc.

8406 HWY 431

Owens Cross Roads, AL 35763

(256) 725-7030

fax: (256) 725-7031

E-mail: sales@zabcoprod.com



RUBBER WEAR PRODUCTS

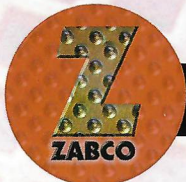
ZABCO Rubber Wear Liners provide a wide range of products serving the quarry and mining industry with a quality product at competitive prices.

- Vibrating screen feed box and discharge lip liners
- Mechanism tube covers
- Rubber covered side clamping plates for screens
- **Zerma-Clad™** ceramic/rubber liners
- Impact or lifter bars
- Classifier Shoes
- Chute Liners
- Hold Down Bars
- Impact Pads
- Skirt Board Rubber

- Custom-made to fit your application with counter-bored bolt holes or studs.
- Available in 1/4" to 4" thick rubber on 11 gauge to 1/2" thick steel.



Custom made rubber feed lip liner



RUBBER SCREENING PRODUCTS

Z-CLAD Bolt-Down Style Screens used as an impact zone for feed points on vibrating screens. (shown, right)

- Available in 1" to 4" thick.



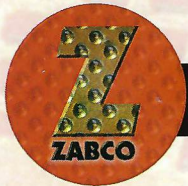
Z-CLAD Screens are available with skid bars in both Bolt-Down style (shown above), or Hooked.

- **Benefits for Skid Bar Screens are two-fold:**
 - Stratifies larger particles from smaller ones, allowing improved screening performance and throughput.
 - Doubles wear life of most scalping screens.



Hooked and Bolt-Down styles shown.

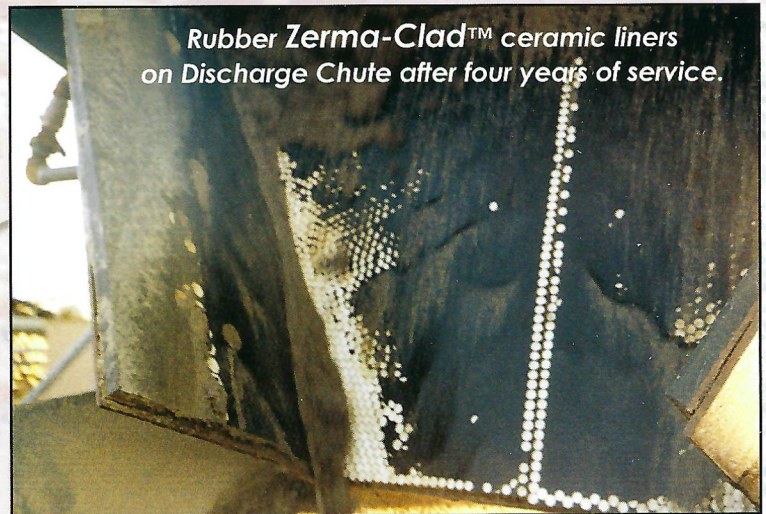
Z-CLAD Screens shown here are available both in round and square openings in thicknesses from 1/8" to 4" thick premium grade abrasion resistant rubber.



RUBBER WEAR PRODUCTS

Applications for Zerma-Clad™ Ceramic Liners:

- For maximum wear resistance, use Zerma-Clad™ ceramic cylinders or balls molded into resilient rubber from 3/4" to 2" thick ceramics.
- Available with studs or counter bores.
- Zerma-Clad™ Lining Systems are available for light, medium and heavy duty applications.
- Unlike other ceramics, Zerma-Clad™ liners can even be used at high wear impact points, such as transfer chutes, discharge gates, and primary screen impact areas.
- Feed and Discharge Lips for Vibrating Screens.
- Rollaway and Discharge Chutes.
- Slag Chutes.
- Ore Bins.
- Conveyor Transfer Points.
- Primary Screen impact areas.
- Coke and Pellet Flop Gates.



Rubber Zerma-Clad™ ceramic liners on Discharge Chute after four years of service.

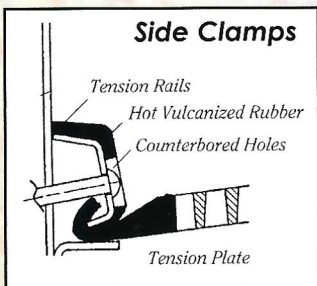
- 1/4" thick AR Steel Tension Clamps now available to fit most vibrating screens:

- Deister
- Tyler
- SECCO
- Hewitt-Robins
- AC
- Cedar Rapids

Steel Tension Side Clamp

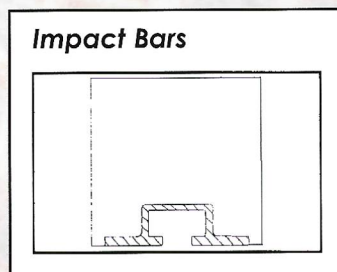


- Also available with extra 1/4" thick "Armor Plate" wear liner.



- Hot vulcanized rubber covered clamp plates for all models of vibrating screens.

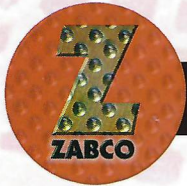
- Liner Bars or Impact "dead bed" bars are available in a variety of sizes with aluminum extrusion for fastening or steel plate with studs or counter bores.
- Use for lining chutes, feed and impact points, and rollaway chute boxes.



Mechanism Shaft Covers



- Available in weld-on style (shown above) covering 180° of the tube or bolt-on style.
- 1/2" to 1" thick abrasion resistant premium grade rubber compounds in 40 or 60 durometer.



URETHANE SCREENING PRODUCTS

The ZABCO line of polyurethane screening media is custom made to fit your equipment, whether it be a side tensioned screen, or one of the modular style screen surfaces, (i.e. 1'x1' pin style, grooved panel, or snap deck). Our proprietary formulation of polymers provides you with the ultimate in maximizing wear life and operating economy.

Consider the many benefits of using ZABCO Polyurethane Screens:

- Proprietary cast polymers that outperform injection molded thermoplastic urethanes, providing you cost savings in down-time and materials.
- Composite technology to enhance screening performance and life.
- Ideal for highly abrasive applications both wet and dry.
- Outwears wire cloth by 20 - 30 times and perforated plate by 10 times in most cases.
- Reduce noise pollution by as much as 40%.
- Reduces blinding when compared to wire cloth and perforated plate, due to tapered hole design.



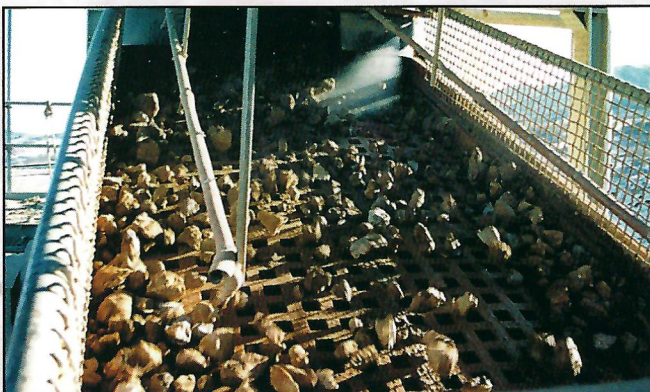
ZABCO HOOKED STYLE URETHANE SCREENS

PUT ZABCO TECHNOLOGY TO WORK FOR YOU WITH THESE VERSATILE SCREENING SYSTEMS



ZABCO Hooked Style Urethane Screens

- Available in Cable Reinforced or the Heavy Duty Steel Backed version.
- Using ZABCO Proprietary Blended Urethanes will provide wear life that may exceed twice the life of rubber screens and do it cost-effectively.
- No Deck modifications.
- Quick interchangeability with wire cloth or perforated plate.



Hooked screen with impact zone.

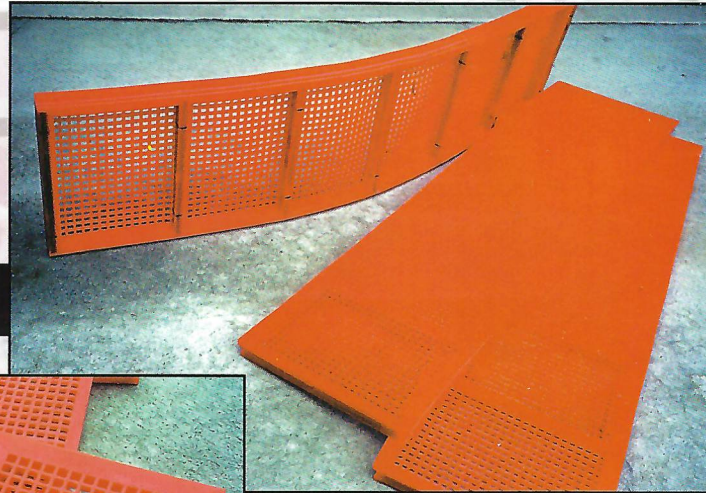


Z-GROOVE URETHANE SCREENS



Orange screens are ZABCO and yellow ones are competitors'.

- Available in both Center and Side Panel configurations in a variety of openings (1/8" to 4" square) and thicknesses (1" to 3").
- Heavy Duty Support Frames prevent panel "cave-in".



Z-GROOVE HY-FLEX (Membrane)

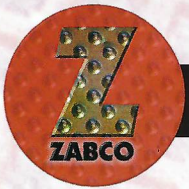
High open area screen

- Available in openings from 1/8" to 5/8" square openings.
- Flexible surface promotes "clean" and high screening efficiency.
- High open area design for maximum output and productivity.



High open area

Flexible Surface for maximum screening

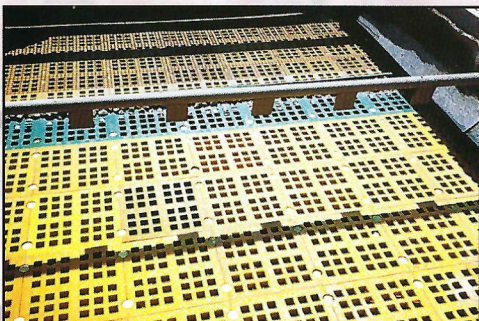
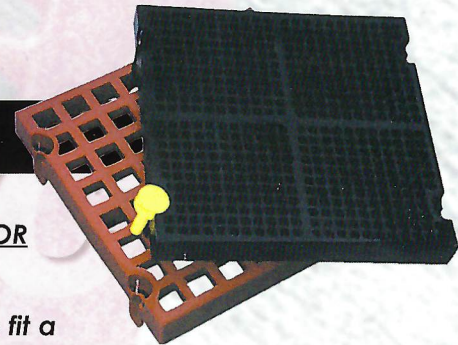


Z-DECK 1'X1' URETHANE SCREENS

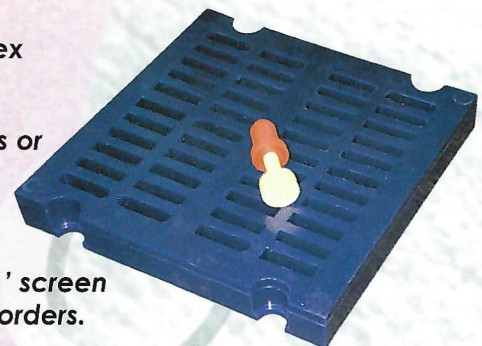


Maxi-Flow Integral Sleeve Design 1'x1' screen shown above with narrow borders and high open area.

- Available in Pin and Sleeve style OR Sleeve molded into panel style.
- 1'x1' screens are also available to fit a maxi-flow high open area screening system with molded-in sleeve.
- Thermoset (not injection molded "plastic") premium proprietary polymer guaranteed to outwear thermoplastic injection molded screens.
- Also available in ZABCO Hy-Flex (Membrane) design.
- Weight saving composite frames or standard steel frames available.



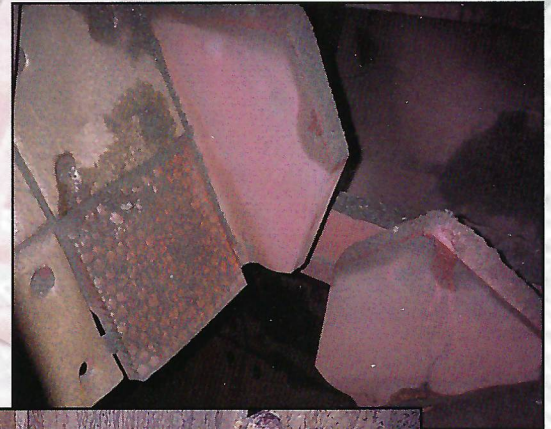
Pin and Sleeve style 1'x1' screen shown with standard borders.



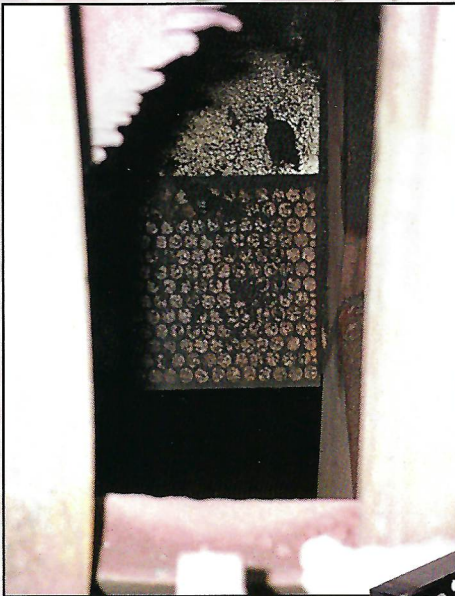


ZERMATHANE™ Ceramic Wear Liner Features:

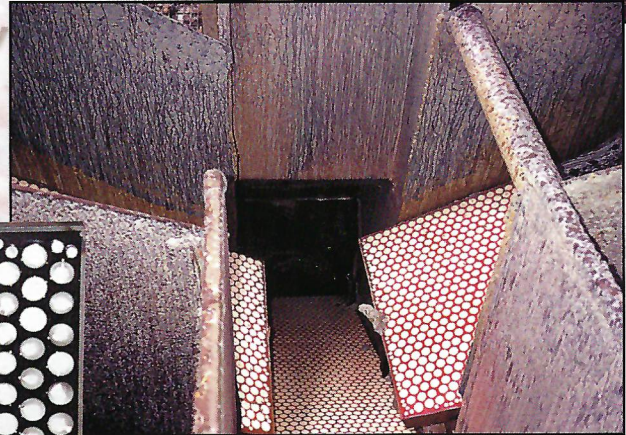
- Custom designed and formulated to provide the ultimate in ceramic wear life.
- Unique design prevents ceramic from detaching from urethane.
- Provided with counterbore or stud fastening systems.
- Cost effective when compared to other lining systems.



Transfer Point
Deflector Liner
shown above.



Deflector Gate with ZERMATHANE™ ceramics outperformed chrome plate six to one.



ZERMATHANE™ ceramic chute liners used in a high volume ore application.



Available
also in standard
1'x1' panels
with studs

Applications:

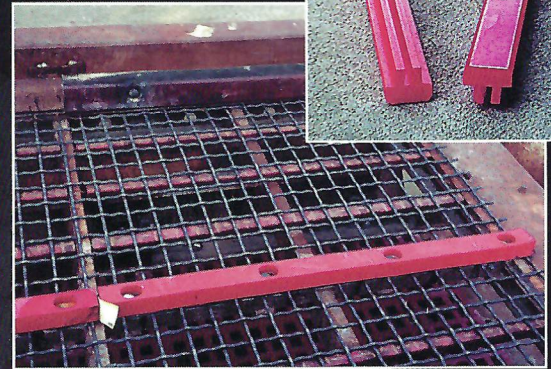
- Chute and bin liners for coal, coke, iron ore pellets, copper ore, and hard rock.
- Flop gate diverters for coke, slag, and other minerals.
- Feed box, discharge lip, and vibrating screen box liners.
- Pan feeder liners.
- Conveyor transition points.
- Scalping screen matrix and impact areas.



ZABCO WEAR PRODUCTS

ZABCO Urethane Crown Bar Liners

- The best Insurance you can buy to protect your urethane, rubber, wire, and perforated plate screens from premature failure or breakage.
- Unique flat design keeps liner on the bar rail and does not allow it to roll off like rubber crown bar liners.
- More weather resistant to deterioration than rubber liners.
- Better abrasion resistance provides longer life, less down-time and less maintenance, **resulting in lower operating cost.**



ZABCO Urethane Crown Bar Liners being used with wire screens.

ZABCO Urethane Side Clamping Bars

- 1/2" thick premium urethane covered clamp bars.
- Available for any model screen.
- Can also provide all steel O.E.M. style clamping bars at a significant savings.



ZABCO Urethane Skirt Board Liners

- Custom made to fit your application.
- Can be supplied with beveled working edge in your selection of thickness and width.



ZABCO Conveyor Scraper Blades

- We recondition your old conveyor scraper blades to work like new with our proprietary urethane abrasion resistant polymers.
- Very cost effective when compared to new blades.

